

# REDEEMER REPORTER

REDEEMER LUTHERAN CHURCH & CHILD CARE - OCTOBER 2013

## “SICK AND TIRED . . . SICK AND DYING”

Don't you just get sick and tired of things? I mean seriously. Don't you get sick and tired of things like the media, the government, or the unstable economy? How about the sexual content on daytime or primetime television programming? Where have the wholesome and good programming gone? Of course, the same could be said about the media, the government, and the economy. What tumultuous times we live. Aren't you just sick and tired of it all?

Lately, some of us could say, “We're sick and tired of all the rain!” When it rains it pours. How appropriate. Speaking of, how about the other things you're sick and tired over, the things that are a little bit more personal; things you don't necessarily share with others? Things like worrying about your health, procrastination, or your house always in a mess. Are you sick and tired over these things too? Well let's not stop there. Are you sick and tired over being in debt, being unemployed, being overweight, or being alone? Aren't you just sick and tired of being sick and tired? Surprisingly many of the things you struggle with and are sick and tired over are experienced by many of us. You are not alone.

It's all too easy, isn't it, to find fault and cast blame over the things we are sick and tired about. Let me ask you: Does it do any good to find fault or to cast blame over these things? What I mean is this: Is the problem of which you are sick and tired over any better or has the problem been resolved following your barrage of blame? I would conclude: almost always never. Furthermore, I would wage to say that the situation or the circumstance becomes worse as a result of pointing fingers or the outburst of an untamed tongue.

I suppose one could make phone calls, write letters, send emails, or sign petitions when attempting to change or resolve issues with regards to the media, government, or television programming. But what about some of the personal things, the secret things you're sick and tired over?

The Psalmist David cried out, “My heart is in anguish

within me; the terrors of death have fallen upon me. Fear and trembling come upon me, and horror overwhelms me” (Psalm 55:4-5). It sounds like David was sick and tired too. I told you, you weren't alone.



Even having the knowledge that he was anointed the next king over Israel, David was sick and tired of always having to find a place to hide from the trouble that haunted him. And even after becoming king, his troubles and personal anguish didn't vanish, they only grew worse. Yet, he was a man after God's own heart (1 Samuel 13:14), set on doing God's will, knowing with confidence, the security and eternal peace God promised (2 Samuel 7:8-17).

David wasn't perfect just as you aren't perfect. He was a sinner just as you are a sinner. And when he sinned, he repented. He was a man, like you, sick in sin and dying in sin. God showed him mercy, forgiving him his sins and restoring him to the joys of salvation (Psalm 51:12). God shows mercy to the sick and dying. He shows mercy to you. He shows mercy to me.

Jesus, the Redeemer of the world, came for the sick and dying sinner (Mark 2:17). He came for David, He came for you, and He came for me.

The Apostle Paul writes, “For all the promises of God find their Yes in [Jesus]. That is why it is through Him that we utter our Amen to God for His glory. And it is God who establishes us with you in Christ, and has anointed us, and who has also put His seal on us and given us His Spirit in our hearts as a guarantee” (2 Corinthians 1:20-22).

In Baptism God has set His seal upon you, granting you the promised inheritance of His Son, your Brother, Jesus Christ. In Holy Communion, He comes to feed you His

*Continued on Page 3*

<b>Pastor</b>	<b>Rev. James Kress</b>
<b>Seasonal Pastor</b>	<b>Rev. Mark Steinke</b>
<b>LHM Ambassador</b>	<b>Rev. Earl Schmidt</b>
<b>Child Care Director</b>	<b>Wendy Horvath</b>
<b>Office Secretary</b>	<b>Susan Moore</b>
<b>Organists</b>	<b>Bill Bowers Lanette Schmidt</b>
<b>Director of Music</b>	<b>Bill Bowers</b>
<b>Choir Director</b>	<b>Collins Sita</b>
<b>Newsletter Editor</b>	<b>Susan Moore</b>
<b><u>OFFICERS</u></b>	
<b>President</b>	<b>Rich Kueker</b>
<b>Vice President</b>	<b>Brian Abel</b>
<b>Treasurer</b>	<b>Judy Murphy</b>
<b>Secretary</b>	<b>Betty Clemens</b>
<b><u>BOARDS</u></b>	
<b>Head Elder</b>	<b>Tim Byrne</b>
<b>Assimilation</b>	<b>Deb Kueker</b>
<b>Property Mgmt</b>	
<b>Christian Ed.</b>	<b>Pam Replinger</b>
<b>Human Care</b>	<b>Carol Carlos</b>
<b>Outreach</b>	<b>Ty Schulte</b>
<b>School Board</b>	<b>Bill Bowers</b>
<b>Stewardship</b>	
<b>Youth</b>	<b>Dan &amp; Rebecca Fernandez</b>
<b>Financial Secretary</b>	<b>Karen Kirkland</b>
<b><u>CLUBS/GUILDS</u></b>	
<b>Ladies Guild</b>	<b>Sally Zierdt</b>
<b>Men's Group</b>	<b>Bob Mortenson</b>

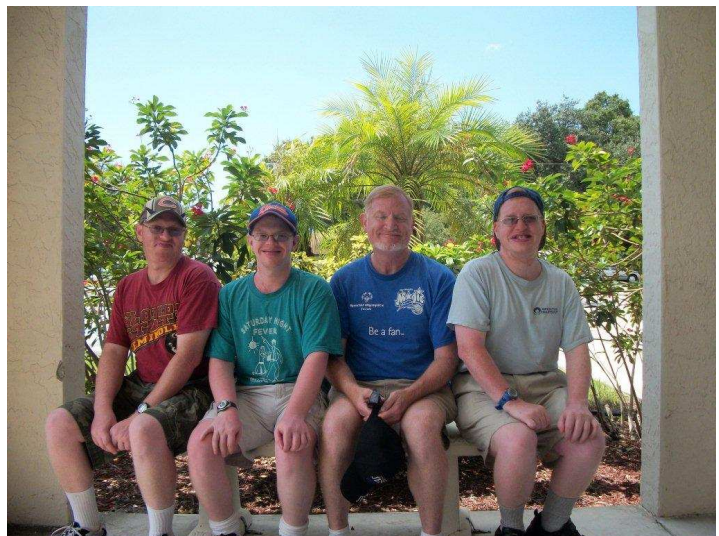
## ***THE PRESIDENT'S CORNER***

Deb and I decided to stop by the church on a recent Saturday afternoon, to check up on a few things. Upon our arrival, we noticed a group of five or six strangers entering the building. It did concern us, given the time of day, that the door was unlocked. However, Gretchen was there, hard at work, sprucing up the Narthex for Sunday. So, Deb and I proceeded to 'investigate the strangers'. The strangers turned out to be Pastor Jay Brigham, his sons, and a few friends. For those of you, (like us at that moment), who do not recognize the name, check out the picture of the first pastor at Redeemer; his picture is at the far left in the Narthex.

Pastor Brigham and a group of about thirty, he told us, had the first vision of the future Redeemer, on what was then, endless Floridian growth. At that time, there weren't any homes in the area, either. Like the quote from the movie, Field of Dreams, "If you build it, they will come", it was Pastor Brigham and this small group of thirty who purchased the land where Redeemer is now located.

Without that vision, would there be a Redeemer Lutheran Church and Childcare in Englewood? What is the Lord's vision for Redeemer now? Pray for your VisionPath team as it prepares a plan to present to our congregation. As Pastor Kress recently mentioned at a Sunday service, over a thousand souls have been touched by the Holy Spirit here at Redeemer. Thank God for Pastor Brigham's first VisionPath.

*Rich Kueker, President*



## “SICK AND TIRED . . . SICK AND DYING”

true body and true blood for the forgiveness of sin and for the strengthening of faith. His Words are not empty but fulfilling. His Words are not weak but powerful. His Words are not temporal but eternal. His Words to you are love.

My friends, in a world in which we are surrounded by so many things we are sick and tired over, we need to repent and look upon the sick and dying among us with mercy and a heart set on carrying out God’s will.

In His Service,  
Pastor Kress



## CHILD CARE ICE CREAM SOCIAL



## UPDATE: VISIONPATH DEVELOPMENT TEAM

The Vision Path Development Team has been busily functioning as an ad hoc arm of the Church Council. Team members have been addressing the massive information gathered by the Synod's Lutheran Church Extension Fund open-ended survey questionnaire. This information synthesis process has been both intensive and rewarding. The basic tasks were to massage the data, cluster the responses, and identify the concerns most pressing to the respondents. Every effort was made to insure cross-validation and interrater reliability on the emerging conclusions from the survey responses. The outcomes from the data interpretation effort revealed the following: (1) the exploration of a multi-faceted outreach effort, (2) a future feasibility study for a school/child care facility, and (3) the future expansion of our youth development programs.

In addition, the Team has been pursuing linkages with the Board of Community and Parish Fellowship, the School Board, the Board of Christian Education, and the Board of Stewardship. These groups will receive the data from the survey as it relates to their immediate strategic plans and long range planning. After interacting and gathering input from these affiliate groups, the Team will produce and internally validate a shorter (less time consuming) and more specific survey. This brief survey will be ready for the congregation's deliberation and response sometime during mid-October.

*Submitted by Bud Harty, Vision Path Development Team Chairman*



## LOST AND FOUND

*If anyone is missing any items, namely eyeglasses, gloves, umbrellas, etc., please check the Lost & Found box located in the narthex. There are quite a few items there at this time.*



- Oct. 6th: Ed & Carol Sheahan
- Oct. 13th: Sally Zierdt
- Oct. 20th: Ken & Cathy Mielke
- Oct. 27th: Erna Abel

*Submitted by Assimilation*



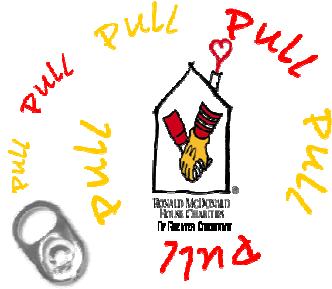
- Oct. 6th: Linda Rogers & Erna Abel
- Oct. 13th: Donna Wolf & Helen Plank
- Oct. 20th: Judy Scarangella & Linda Rogers
- Oct. 27th: Mary Kay Straw

*Submitted by Assimilation*

## PLEASE HELP!!!!

### Wanted: Soda Can Tabs!!

Soda can tabs are being collected for a child who has Leukemia. The tabs will be given to The Ronald McDonald house to cash in at a recycling center. The money raised will be used to help defray the cost of treatment for the child. The tabs may be dropped off in the office. If you have any questions, please contact Jenni Dolphin or Margie Cypher.



## OLD INK CARTRIDGES

If anyone has any old ink or toner cartridges, rather than throw them away you can donate them to the church. By recycling of empty ink cartridges and toner cartridges, we are able to save money on purchases that are made through Staples. In this economy, every penny we can save will benefit Redeemer. There will be a box on the Visitor's table in the Narthex to drop off any that you would like to donate, or you may drop them off to Susan in the office during the week. Thank you!  
*Submitted by Susan Moore, Church Secretary*



## PROPERTY APPRECIATION DAY



Please join us for our next monthly "Property Appreciation" Day on the second Saturday of the month, October 12th!!! We begin at 8:00 AM and continue until the last person has to go for the day. Join us in keeping our buildings and properties beautiful. There's a little something to do for anyone who is willing to help... We would like to thank everyone for all their hard work each month. THANKYOU!

*Submitted by The Board of Property Management*

## SINGLES LUNCHEON

The Singles lunch will be on Tuesday, October 8th at 11:30 AM at *Mango Bistro*, 301 W. Dearborn St., Englewood. The interest in this lunch has dropped off except for four to six persons. It has been close to a year now and maybe people are not interested. This was started in order to give persons, who live alone, the chance to get out of the house and lunch with friends. We will continue until the northern folk return and make a decision. If you would like to join us -- please sign up on the sheet in the Narthex. Sign up sheet is on the Visitor's table in the Narthex. Please sign up no later than Sunday, October 6th.

*Submitted by Lessie Kirch*



**REDEEMER LUTHERAN CHURCH COUNCIL MEETING – AUGUST 12, 2013**

PRESENT: Pastor Kress, Rich Kueker, Brian Abel, Karen Kirkland, Judy Murphy, Deb Kueker, Carol Carlos, Pam Replinger, Ty Schulte, Bill Bowers, Betty Clemens

The meeting was called to order at 7:00 p.m. by President Rich Kueker.

Pastor Kress opened the meeting by reading Psalm 20 and saying prayer

MINUTES of the July 8, 2013 meeting were presented. BILL MOVED TO ACCEPT THE MINUTES AS PRESENTED. JUDY SECONDED. MOTION CARRIED.

CALENDAR for September was presented. Following changes were made: Monday, Sept. 2nd Parade should meet at 8:30 AM instead of 9:00. Board of Community & Parish Fellowship will meet on September 26th at 7:00 PM.

**REPORTS**

PASTOR: Report attached.

The National Offering reached \$484,000.

PRESIDENT:

Regarding VisionPath survey, members are having difficulty with questions. Pastor will send email to members with sample answers. Pastor said there will be a report or audio of the meeting on August 24th for those who cannot attend. September meeting on Monday the 9th will begin at 5:30 with dinner followed by School Board Meeting at 6:00 and Council Meeting at 7:00.

BOARD OF ELDERS: NO REPORT

TREASURER: Report attached.

HUMAN CARE BOARD: Report attached. 16 units of blood were collected. Next drive on October 6th.

PROPERTY MANAGEMENT: NO REPORT. Rich Kueker has replaced 4 thermostats; one in Narthex, 1 in Child Care, 2 in Fellowship Hall. Needs to replace 2 more. This will save a minimum of \$1000.

Thanks to the volunteers who did a great job of painting in the Child Care.

YOUTH: NO REPORT

ASSIMILATION: NO REPORT

COMMUNITY & PARISH FELLOWSHIP: Report attached. Ty Schulte is preparing for the Pioneer Days Parade. Our theme is the movie, "The Ten Commandments". He will also have a small sign "Thanks to Sgt. Wilson". If he is out of town he will make sure someone will drive the truck.

CHRISTIAN EDUCATION: NO REPORT

SCHOOL BOARD: Report attached. Bike Track is in permitting stage for price of \$2800. There are 10 VPK children. Lisa and Pat Finkenbine are working on rebuilding the website.

UNFINISHED BUSINESS: The swing set has been repaired.

NEW BUSINESS: Discussion was held on whether or not we should get A/C repaired in the school bus. PAM MADE A MOTION TO REPAIR THE A/C IN THE SCHOOL BUS. CAROL SECONDED. MOTION CARRIED. Ty will get prices on a protective canopy for the bus. Stripping and waxing of the floors in the Fellowship Hall and Child Care was discussed. Pastor said that there are some tiles that need to be replaced and we do have tiles to make that repair. Bill will get price for both buildings. Painting of the outside of the building will be deferred until after the rainy season. Regarding Vision survey, Pastor will announce at the next service that anyone who is confused by the questions are invited to stay after the service and meet with Rich Kueker who will be glad to answer their questions.

JUDY MADE A MOTION TO ADJOURN. TY SECONDED. MOTION CARRIED.

Meeting adjourned at 7:20 with a prayer by Pastor Kress and everyone joining hands and singing the Doxology.

*Respectfully Submitted,*

*Betty Clemens, Congressional Secretary*

## PRAYERS



**SHUT-INS:** Marjorie Boliere, Evelyn Etheridge, Erv Maki, and Ruth Sutley.

**HEALING: Members:** Bob Aldene, Carl Bertka, Caleb Borza, Elma Cancellieri, Ed Doenges, Fred Fernald, Family & Friends of Donna Hansen, Sharon Harris, Bernice Heppner, Debbie Horner, Erwin Janke, Lisa Kress, Peg Leverenz, Sandi McGrath, Marilyn Melcher, Stacy Neef, Helen Perry, Pat Petersen, Carolyn Plesner, Ron Ratzlaff, Michael Sanders, Duwayne Schoeneck, Sandy Sita, Marie Talley, Fred Toth, Inge Tringali, Arlene Wiley, Ronald Woller, and Eileen Zwick.

**Friends & Relatives:** The Family of Michael Aldene, Linny Aspery, Jean Bajner, Gioconda Barlow, Shirley Bloom, Grace Blum, Dennis Burchell, Georgia Bush, Jack & Cathy Carlos, Debbie Carr, Esther Clapham, Bobbett Clark, Wayne Coulter, Martin Cressman, Renee Dempsey, Irene DiTommaso, James Dodge, Barb Dumeah, Chuck & Barbara Ebert, Maggie Edberg, Dorothy Evans, Manual Galan, Glenn Galway, Nancy Gleis, Debbie Harrison, John Haupt, Larry Headun, Claudette Hendershot, Judy Hein, Joel Heppner, Walter Heppner, Glory Herget, Robin Hincman, David Hirtle, Larry Hladun, Tom Holt, John Hunter, Linda Hunter, Stanley & Lynne Jablonski, Carl Jennejohn, Heather Johnson, Betty Kabert, Rachel Kagay, John Kearns, Jackie Klinger, Mary Krueger, Jim Lane, Ray Likowski, Denise Line, Don Luffingwell, Sean Maki, Elsie Malecki, Joe Manson, Pete Mogg, Linda Mohr, Mike Morrissey, Kaye Gene Mortenson, Darwin & Noreen Oliver, Charles Pentecost Jr., Mary Raines, Tucker Robert, Doris Rudewicz, Cookie Schneider, Ty Schulte's mother, Ryan Sheahan, Nancy Sly, Debbie Speer Smith, Virginia Stanley, Gary Stokes, Eva Tabbitas, Mary Temple, Charles Tolley, Samantha Jo Ann Toth, George Vespa, Pat Vovcsko, Caitlin Wagner, Steven Walker, Helen Weishaar, Gordan Winkel, Reece Withers, Tim Wright, Angel Zavala.

**Military Personnel:** Mark Baranowsky, Michael Broughton, Brian Jackson, Brett Keck, David MacLeod, Michael Monson, Charles D. Weishaar.

**Pastor and members of the church are always willing to pray for you, family members and friends. If a loved one appears on our prayer list above, please call Pastor or the church office to give us a health update so that we may either keep or remove their name. Thank you.**



## ENGLEWOOD HELPING HANDS

Our food pantry shelves are empty! We are completely out of tuna, cereal, macaroni and cheese, peanut butter, beans, pork 'n beans, condiments and cookies. We are extremely low on soup, canned chicken, fruit, jelly, and toilet paper. Please help us restock our shelves. This is the time of the year when we have our greatest need. We just had 77 people come in to our pantry and we gave out \$1200 worth of food and groceries. Without further donations, we will not be able to serve our community. We are located on the campus of Englewood United Methodist Church at 700 E. Dearborn Street in Englewood. We are open Monday - Friday from 9:30 AM to 2:30 PM. Thank you for your support! If you need further information please call Dale Whipple at (941) 786-6116, or catch him at church. This is a good way to serve our Lord and to be of help to those who are in need.



*Submitted by Helping Hands & Dale Whipple*

## “CAN YOU GUESS WHO THESE PEOPLE ARE?”

Welcome to my “Guess Who This Is” section. If you would like to be a part of this, please submit a childhood photo to me either by email or by dropping by the office so that I may make a copy of it. So, for Round 4....Guess Who????!!! Can you figure out who each of these people are? The first person to correctly give me the answer for all three will win a prize!!! Good Luck!! Answers will appear next month.

*Submitted by Susan Moore, Church Secretary*



Last month's pictures were (listed in order): Doris Dykhuizen, Billy Ruccatano, & Herb Petersen. How did you do?

### \$\$\$\$ CLASSIFIEDS \$\$\$\$

**Sales—Rentals**

Pineapple Gulf Properties—Glenda McDorman, Owner/Broker (Lessie Kirch's Daughter), 350 S. Indiana Road Englewood, FL 34223.  
Office: 941-473-0300, Cell: 941-330-7922.

**Cleaning Services**

Free estimates! Please contact Sheila Murphy at 941-473-1747.

**Lawn Care**

Call Todd Armstrong at 941-961-7584 for your lawn care needs.

**Construction**

Call Rob Long! A.C.S., Inc. - Licensed General Contractor - Anything from full remodels, full lanai's, window and door installation and ALL phases of construction. State certified licensed and insured. Please call for a free estimate at 941-475-5008 or 941-232-6606!

**Real Estate**

SURF & SAND REALTY - Pat Whipple, Realtor 2350 N. Beach Road, Unit 3B, Englewood, 34223. I'd love to help you find your perfect home or sell it, because I really care. Please contact me at 941-882-2725 or (941) 474-7755!







## **Lutheran Women in Mission**

Welcome to the Fall Season and the beginning of Ladies Guild/LWML for the 2013-14 season. The LADIES GUILD/LWML meets the first Wednesday of each month beginning October thru April. We begin at 12:30 PM with a COMPLIMENTARY LUNCH. All ladies of the congregation are invited. Now how often do you get a free lunch? If you have not been to our meetings, we welcome you to come check us out. This year things will be a little different. We begin the meeting with a program followed by the business meeting. We have a variety of programs planned, none of which you want to miss, especially the one on November 6th. Archaeologists measure times in Ages-Stone, Bronze, and Iron. Within each age there grew a myriad of cultures. Each culture evolved according to their various natural environments. During the Bronze Age the Egyptian, Chinese, Myan, Greek and Roman cultures took their turn at center stage. At the same time, here on Florida's Gulf Coast between 1000 BC and 1350 AD our own native culture evolved at Indian Mound Park. Come hear more about this big picture from Don Sachilke, President of Englewood's Friends of Indian Mound Park. Since this is such an interesting program, the LADIES WOULD LIKE TO INVITE THE MEN to be our guest. We will serve dessert and drinks prior to the program. All are welcome at 12:30 PM. Ladies, don't forget to bring your mites and wear your name tag since we will be having some new persons. If you check around, please bring items for the Kraft Korner. Thanks. *Submitted by Lessie Kirch, Vice President*



## **REDEEMER CARING NETWORK**

The Caring Network seems to be slipping by the way side. We, presently, have 19 groups which covers the membership of our congregation. I know some leaders have been ill and others are up North or on vacation. It is very important for us to help those in need. To be a Network leader is not a BIG job. All one has to do is keep track of the members on his or her list to do the following: just say hello, send a card when ill or a special occasion, etc. Maybe they need a ride or maybe one just needs to know we care. We have a list of volunteers who will help with sitting, meals, transportation, things of this sort. One does not have to all the previous things themselves, but just see that they are taken care of. Many people in our congregation live alone and will not call asking for help. This is one of the reasons we have this network program, to keep check and see if there is need. One good thing is to read the bulletin for the names on your list. Some just need a phone call and prayer. We have so many elderly, it is difficult for the Pastor to keep up with all the needs and that is when we as leaders can help. If you are presently a leader, I will be calling you to check in and see how things are going. We are in need of some new leaders since some are ill or have moved. If you would like to be a leader or have questions, please call me, Lessie Kirch (941) 475-3689. We are thanking you in advance and hope that you will prayerfully consider being a leader. Thanks!



*Submitted by Lessie Kirch*

## STEPHEN MINISTRY

### WANT MORE FREEDOM AND JOY?

Did you know that there is joy and freedom when we put the needs of others ahead of our own? Stephen Ministry provides this kind of care, freedom and joy. If you have ever thought about finding ways to bring Christ's love to those who are hurting, you need to learn more about Stephen Ministry. People are precious, and when they hurt or suffer, they deserve the best care and support we can offer. That's why our congregation has Stephen Ministers. Their training, commitment, and service make them the best at providing care for people who need it. Do you want to give your best to God and to others? Carol Carlos 941-255-3354 or Carol Haupt 941-460-8830 can give you the information you need concerning Stephen Ministry. IS GOD CALLING YOU?

**"Dear children, let us not love with words or tongue but with actions and in truth." ~ 1 John 3:18**

## HUMAN CARE

We encourage all members of our congregation to join in the various activities Human Care offers. You are definitely welcome to bring friends along. We have our games on Thursday mornings and our luncheons once a month. The caring network is always looking for helpers. Contact Lessie Kirch for further information 941-475-3689.

Take advantage of our Care Notes handled by K.C. Wright. You will find these helpful pamphlets in the Narthex and childcare.

If you need a greeting card sent to military personnel or someone in crisis call Mary Blakley 941-474-4520. Mary is an artist and paints and handwrites the cards. Beautiful!

Blood pressures are done by Nancy Kozak, Lillian Miles and Carol Carlos. If you are interested in helping call Carol 941-255-3354. Blood pressures are taken the last Sunday of every month in the baby room located in the Narthex. Take advantage of having your blood pressure taken by someone else other than you.

***Our Blood Mobile visits 4 times per year scheduled by Carol Sheahan. The BIG RED BUS will be here OCTOBER 6TH from 8:30 AM-11:30 AM. LET'S DOUBLE THE 16 UNITS WE DID LAST TIME. One donor saves 3 people!***



Stephen Ministry is part of the Human Care Board. We each have care receivers that we visit weekly. We also visit hospitalized, those in long term care facilities, send cards and upon a death the survivor receives 4 booklets throughout the year entitled "Journey through Grief". For further information contact Carol Carlos 941-255-3354 or Carol Haupt 941-460-8830.

Get involved with "Relay For Life" from the American Cancer Society. The money that is raised from the projects and the relay helps to pay for lodging at an American Cancer Society Hope Lodge, helps patients get to and from treatment with the Road to Recovery Program, supports Reach to Recovery volunteers as they visit newly diagnosed breast cancer patients, covers the cost of information given to those facing cancer, guides patients through their cancer journey through the Patient Navigator Program and funds groundbreaking research and new clinical trials. Become a team member, just ask Nancy Kozak 941-697-1165 or Carol Carlos 941-255-3354. We need people and ideas so join in the fun and come to one of our team parties.

The prison ministry collects Portals of Prayer and takes them to the chaplaincy department of the prison to be distributed.

We also visit those members in long term care facilities.

If interested in any of these endeavors contact the person in charge of each endeavor (above) or Carol Carlos 941-255-3354.

**"Share with God's people who are in need. Practice Hospitality." ~Romans 12:13**

## STEWARDSHIP

“Thanks be to God for His inexpressible gift” (2 Cor 9:15)! This is St. Paul’s exclamation upon hearing the Corinthian church’s response to the preaching of the Gospel of Jesus Christ and his request for support of the Church in Jerusalem.

The Christians in Corinth heard and received God’s mercy in Christ, and they responded to St. Paul’s call to support Christians in Jerusalem with a collection. The Corinthian’s joy filled Jerusalem’s need.

The reality of stewardship is that because of God’s generosity in the giving of His Son to die on the cross for us, we should also be generous with all that we receive from Him. What do we receive? Everything. All that we are and all that we have is the Lord’s. He is the creator and the giver. We are His creatures and those who receive what He gives.

It sounds easy. And it is. But then again it isn’t. Stewardship is easy because it is God’s work in us: through what God gives, we give to others. Through what God gives, we support the work of the church for the life of the world. He gives; we receive. And like our generous Father in Heaven, we, as His children, use what He gives to us to love and serve others.

But stewardship is also difficult. That is because it goes against our natural inclination to think that

what I have is mine to do what I want with. This is our sinful nature. It is our selfishness and our greed. And it convicts us. How can we who have been given everything—life, food, clothing, house, home, forgiveness, divine sonship, an eternal

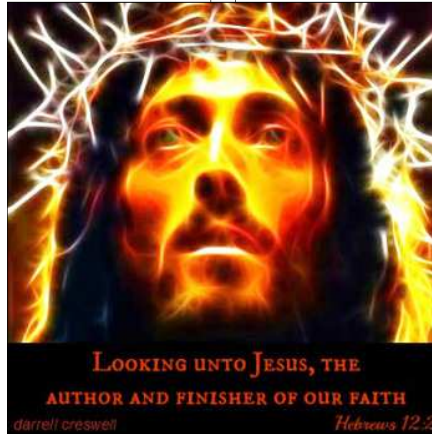
inheritance—be so stingy with what we give to the church, the place where we hear about and receive all that God gives us and does for us? We are all guilty of this kind of thinking. And the only godly response is to repent and trust in the Gospel.

For if God has given you His own Son, will He not give you all things? Yes. He will. This is His

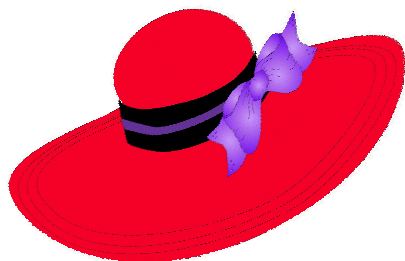
sure and certain promise. God provides for His people. He provides everything we need for this body and life and for the life that is to come.

The church is a mercy place. It’s a place where God’s mercy in the death and resurrection of His Son, Jesus Christ, is given and received. For us who believe the Church is the place of forgiveness, life, and salvation in the face of sin, death, and the power of the devil. There we inhale God’s mercy in Word and Sacrament, and exhale this same mercy in love and service to our neighbor, in giving what we have received from Him. And that is an enduringly joyful thing to do. Our joy fills our neighbor’s need because His joy filled ours (Heb 12:2). Thanks be to God for His inexpressible gift!

*The Board of Stewardship*



## REDEEMER RED HATS



*The Redeemer Red Hats will have their luncheon on Tuesday, October 22nd at 12:00 Noon. Please see the sign up sheet in the Narthex for more information.*

# ENGLEWOOD PIONEER DAYS PARADE

This years Englewood Pioneer Day's Parade theme was "Englewood Goes Hollywood". Our float was of the movie, "The Ten Commandments". Rev. Mark Steinke was Moses! He did an awesome job too! Those in attendance this year were Ty & Judy Schulte, Tricia Hopkins, Makenzie & Aiden Hopkins, Susan Moore, Laurie Steinke, and of course Rev. Mark Steinke. Although it was raining quite hard shortly before the parade was to begin, we did start with a beautiful Rainbow! Mark your calendars now for next years parade, which will be held on Monday, September 1st!

*Submitted by The Board of Community & Parish Fellowship*



**2013**  
*57th Annual Pioneer Days*  
**Englewood**  
*Goes* **Hollywood**

# LUTHERAN CHURCH EXTENSION FUND

## Wow! I Didn't Know That!-LCEF (Lutheran Church Extension Fund) Pondering Points

Did you know :

- \*that LCEF was started over 100 years ago?
- \*that less than 5% of LCMS members are investors with LCEF?
- \*that LCEF benefits Lutheran Church Missouri Synod congregations, workers, and Recognized Service Organizations (RSOs) of the LCMS?
- \*that LCEF offers many different investment options with competitive interest rates?
- \*that LCEF has helped Redeemer Lutheran Church and Child Care grow and expand?
- \*that even you can help expand ministry opportunities within our synod and congregation with just a small investment?

LCEF has a strong history of providing investment opportunities while providing services and loans to congregations and workers. Ministry is able to expand with the money that is loaned. With the many different investment options to choose from, you are not limited to a "one size fits all" investment.

We all have investments, or have thought about having them. When we choose to invest in companies other than LCEF, we never really know where our money is going. With LCEF, you can rest assured that your money will always be working to further mission and ministry of the Lutheran Church Missouri Synod, both near and far. Your investment will fund loans and services that are available to congregations, church workers, and RSOs of the LCMS.

Please see the LCEF display in the narthex or talk to me, your LCEF congregational representative. I will answer any questions you might have regarding investing in LCEF. Prayerfully consider becoming an investor with Lutheran Church Extension Fund.

*Respectfully submitted, Laurie Steinke*



## Lutheran Church Extension Fund

> where investments build ministry

### THANK YOU



Thank you dear members of Redeemer for your prayers and cards of encouragement following my recent surgery and recovery. I am happy to report your prayers and good wishes worked and we plan to see all of you mid to late October.

Your sister in Christ, Eileen Zwick

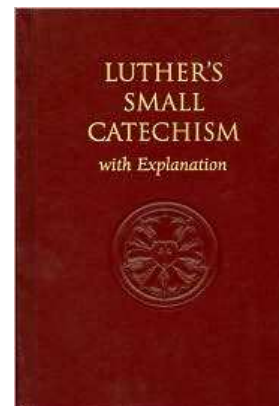
### GIRL SCOUT-DAISIES

A group of Girl Scout Daisies are meeting every Tuesday from 4:30-5:30 here at Redeemer in the small meeting room of Fellowship Hall. What is a Girl Scout Daisy? Daisies are girls in K-1<sup>st</sup> Grade. They go on trips, learn about nature and science, and explore the arts and their communities. Girl Scout Daisies can also earn Learning Petals and receive participation patches. Mrs. Melinda Ireland is the leader of this patch of Daisies. If you have a little girl in kindergarten or 1<sup>st</sup> grade please consider coming on Tuesday afternoon for a wonderful and rewarding experience.



## INQUIRING MINDS WANT TO KNOW, "WHAT DOES THIS MEAN?"

Another cycle of information classes will start **Thursday, October 10<sup>th</sup>** beginning at 7 pm in the large meeting room in Fellowship Hall (a full schedule of classes is provided below). If you have been attending worship services at Redeemer, but are not sure what it is that Lutherans believe, teach, and confess, this is the class for you! If you have been attending worship services here at Redeemer and would like to become a member of Redeemer Lutheran Church & Child Care, this is the class for you! If you are member of Redeemer, but haven't brushed the dust off the old catechism in some time and would like to be refreshed in the teachings of the Christian faith, this is the class of you! This is a relatively painless opportunity to understand more clearly why you believe what you believe. Our classes will conclude on November 14<sup>th</sup> with the hope of welcoming new members into our fellowship on Sunday, Nov. 17<sup>th</sup>. Should you ever have a question, please: Ask the Pastor.



**Thursday, October 10<sup>th</sup>**

**Wednesday, October 16<sup>th</sup>**

**Thursday, October 17<sup>th</sup>**

**Wednesday, October 23<sup>rd</sup>**

**Thursday, October, 24<sup>th</sup>**

**Wednesday, October 30<sup>th</sup>**

**Wednesday, November 6<sup>th</sup>**

**Thursday, November 7<sup>th</sup>**

**Wednesday, November 13<sup>th</sup>**

**Thursday, November 14<sup>th</sup>**

## LADIES THURSDAY MORNING BIBLE CLASS BEGINS OCTOBER 17<sup>TH</sup> AT 10:00 AM

The picture here represents the feeling many people, maybe even you, as we struggle with the basic questions of life.

- **Why was I born?**
- **Why is my life so meaningless?**
- **Why do I experience so much inner conflict in my life?**

You may also have experienced the inner conflict of trying to lead a decent life, but you fail constantly (Romans 7:9). Why are many people – even Christians – afflicted with deep inner struggles? This Bible Class will help you find answers, not in the wisdom of man, but in the cleansing, hope-giving, and living Word of God.



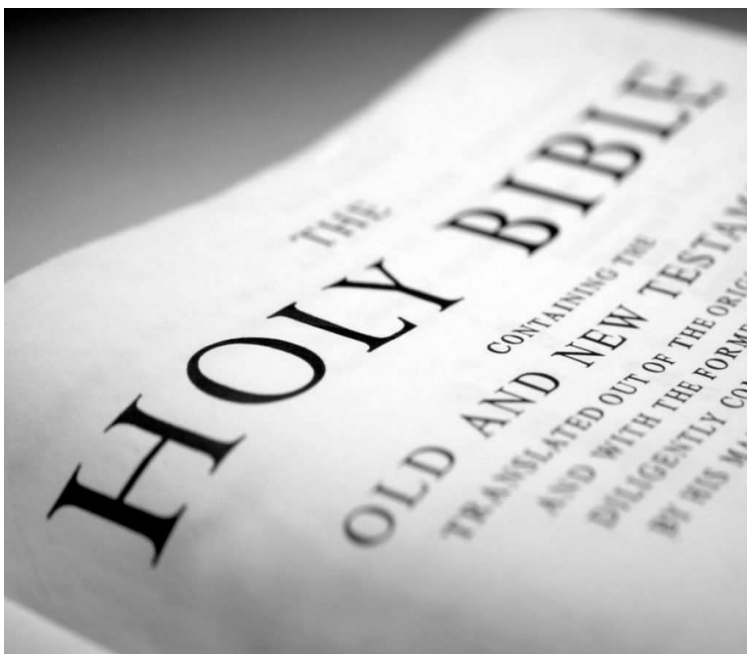
When Adam and Eve disobeyed God, the incurable power of SIN began to live within them. You have inherited this power of SIN that want to control your life. Although the power of SIN within you is incurable, it is controllable, through your life-giving connection to Jesus (Romans 6:4).

Ladies of Redeemer: Come and learn of God's abundant mercy for you. God has answers of hope to your questions of struggle and despair. "Be transformed by the renewing of your mind" (Romans 12:2).

We will once again use *GOOD NEWS* magazine as our guide through this amazing study of God's victory over 'THE POWER OF SIN' through the life, suffering, death, and resurrection of Jesus Christ. Let our Divine Physician, Jesus diagnose the causes of frustration in your life. Class begins **Thursday, October 17<sup>th</sup> at 10:00 AM** in the large meeting room in Fellowship Hall. All ladies are welcome to join us. You may also invite your girlfriend, sister, mother, or daughter.

## WHAT DOES GOD SAY ABOUT . . . ?

Tuesday morning Bible Class will soon begin **October 15<sup>th</sup> at 10:00 AM** with another exciting topic of study: "What Does God Say About . . . ?" An ellipsis (three dots) is intentionally placed at the end of the question to indicate that we will examine what God's Word says concerning almost any concern (question) you may have. Some of the questions we will consider at the onset will be what God says about same-sex marriage, the sanctity of life, the end times, Bible prophecy, etc. Certainly these are some 'hot topics' but just as the average Lutheran layman today may not know any Latin, he probably knows what the phrase 'sola Scriptura' (Scripture alone) means. It means that we Lutherans base our theology, our teaching, the doctrines of the church solely on the Scriptures of God and nothing else, not tradition, not human speculation, not modern scholarship, not our experiences, our feelings, or our emotions, or anything else. Sola Scriptura is a watchword, a guide for action, for every true Lutheran, pastor or layman.



This was the position and practice of Luther and our Lutheran Confessions. "The Word of God is and should remain the sole rule and norm of all doctrine" (FC SD, Rule and Norm, 9). "We pledge ourselves to the prophetic and apostolic writings of the Old and New Testaments as the pure and clear fountain of Israel, which is the only true norm according to which all teachers and teachings are to be judged" (FC SD, Rule and Norm, 3). This is the spirit in which our great Lutheran Confessions speak. Everything we need to believe and do as Christians is told us in the Scriptures. In other words, what God has to say about this or that issue. Just as our Lord Jesus was a man of one Book and drew all His teaching from that One Divine source and submitted Himself to it utterly in all He said and did, so we too who are His disciples today place ourselves joyfully under that prophetic and apostolic Word. And with our Lutheran Confessions we say: "No human being's writings dare be put on a par with it, but . . . everything must be subjected to it" (FC SD, Rule and Norm, 9). So come join us beginning **Tuesday, October 15<sup>th</sup> at 10:00 AM** in the small meeting room in Fellowship Hall and discover "What Does God Say About . . . ?"

# Bible Studies





## SPECIAL BIBLE STUDY OPPORTUNITY: *THE INTERSECTION OF CHURCH & STATE*

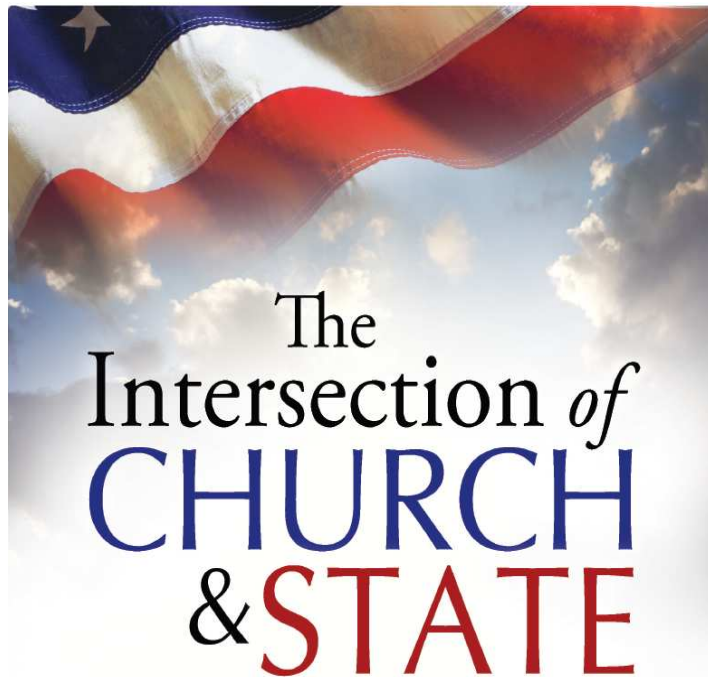
In the U.S. the relationship between church and state is an energetic one. Voices and viewpoints line up across the spectrum. Some would argue from history there should be a “wall of separation” between the two. Others maintain co-existence is not only necessary and inevitable, but can lead to positive results.

In real life, church and state do operate in similar spheres-both conflictingly and cooperatively. See how they interconnect in *The Intersection of Church & State*.

While some may propose a church and state separation is feasible, breaking this long-standing liaison is not likely. Though each entity has its separate function-the state to “promote the general welfare” of its citizens, the church to deal with spiritual concerns in this world, with an eye to the next-in reality they work together.

In this four session series, beginning **Saturday, October 19<sup>th</sup> at 10:00 AM** in the large meeting room in Fellowship Hall, *The Intersection of Church & State* examines the dynamic give-and-take relationship that has marked the crossroads of church and state in this country. Though roadblocks are frequent where the two meet, there is still tremendous potential for cooperative work to be done. Using expert commentary from academics, church and civic leaders, agency professionals and others, this program underscores the healthy collaboration between church and state in caring for the needy, settling refugees, child adoption, chaplain services and more. It will also consider how these historical church and state partnerships are jeopardized. In the end, it will suggest a far superior metaphor in describing the church-state relationship is not one using a wall or barrier but, instead, an *intersection*, which benefits us all.

The Rev. Gregory P. Seltz is the Speaker of **The Lutheran Hour**® radio program. As host of *The Intersection of Church & State*, Seltz assists viewers in understanding the multi-layered discourse existing between church and state in the U.S. and how this relationship can be a fruitful force for good to those in need.



# Martin Luther

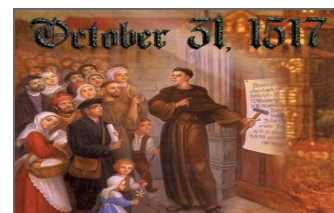
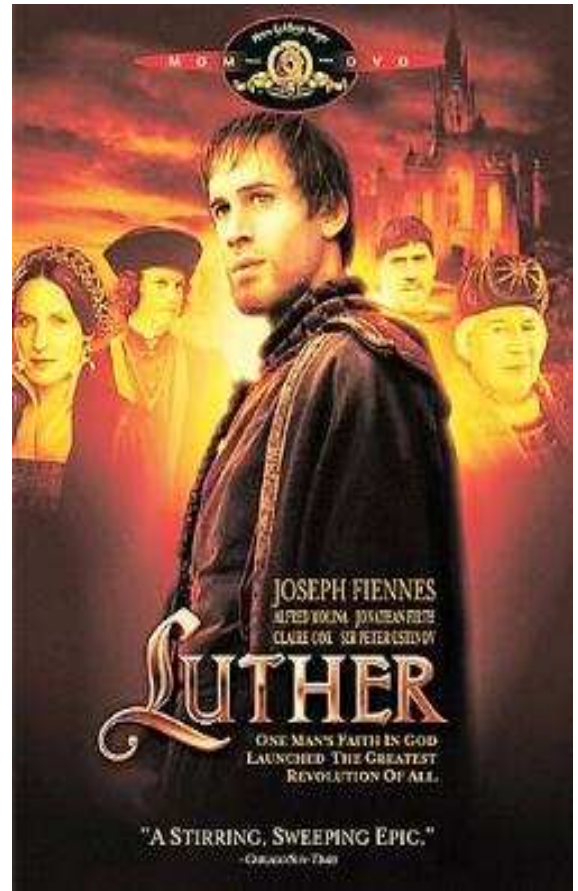
## ON THE BIG SCREEN

For Lutherans all around the world, October 31<sup>st</sup> marks the anniversary of the Reformation. Many of you, like me, came into membership in the Lutheran Church unaware of who Martin Luther is or was. Not until after entering the seminary did I acquired a thirst and a taste to seek him out; his life, his purpose, his legacy.

What did I discover? Luther's power was the power of the Gospel. By God's grace, this power is ours too. For learned and courageous though he was, without the Gospel, who knows where he would've ended up? Would his name have lived into our time? Good thing we need not spend much time wondering about that. We know that Luther clung to the Gospel's treasure and power. He was an imperfect human being, a sinner, as are all of us. All the more therefore did he cling to his Savior – "I am Yours, help me."

Luther's life and legacy of faith gives shape and definition to the religious beliefs and practices of people around the world, and most especially to the church that bears his name. Martin Luther inspires and encourages people to bear witness to their faith in the Gospel, revealed and known by grace alone, through faith alone, on the basis of Scripture alone, on account of Christ alone. With Luther we proclaim, "Here we stand. We cannot do otherwise. God help us. Amen!"

Come join me for Movie Night on **Friday, October 25<sup>th</sup>** in the Narthex beginning at 7:00 PM. Popcorn and refreshments will be provided. Come watch this telling story of one man's desire to reveal the mercy of God to a sick and dying world despite facing opposition from one of the most powerful positions in the world – the papacy.





# OCTOBER

## Bible Lessons

Chapel is on Tuesdays  
at 3:45 PM

10/1 God Keeps His Promises

Genesis 21:1-7

10/8 God Works through Sinful Families

Genesis 37:1-11

10/15 God Has a Plan for His People

Exodus 2:1-10

10/22 God Saves Us from Our Enemies

Exodus 14

10/29 God's People Forget Who God Is

Numbers 13:1-14;38



Dear God, thank You for saving Moses. Thank You for sending Jesus to save me from my sins. Amen.

*Submitted by Wendy Horvath*

## Birthdays

10/7 Abigail

10/8 Therin

10/8 Ella

10/8 Elsie

10/15 Jayden

10/23 Jason H.

10/23 Lizabeth



## Fall Festival



Our Annual Child Care Fall Festival will be held on October 19, 2013 from 12:00-3:00. Please join us and bring the whole family, for a hay ride, games, food, crafts and our Scholastic Book Fair!

## What We Are Learning



9/30 Abraham's Son Isaac Is Born

10/7 Joseph's Father and Brothers

10/14 Moses' Birth

10/21 Crossing the Red Sea

10/28 The Twelve Spies' Report

## Welcome to Redeemer!

Abigail



## Special Days in October

10/31 Halloween

REDEEMER LUTHERAN CHURCH & CHILD CARE  
6970 Mineola Road  
Englewood, FL 34224

ADDRESS SERVICE  
REQUESTED-OPTION 1

NON PROFIT ORG.  
U.S. POSTAGE PAID  
PLACIDA, FL  
PERMIT 774



REDEEMER LUTHERAN  
CHURCH & CHILD CARE  
6465 Mayport Street  
Englewood, FL 34224

REV. JAMES T. KRESS, SR.

REDEEMER REPORTER

Published monthly for Members, Associate Members and Visitors of Redeemer Lutheran Church a member congregation of the Lutheran Church Missouri Synod.

WORSHIP SERVICES:

May—October: 9:15 AM

Sunday School: 9:15 AM

Bible Study: 8:30 AM

CHURCH OFFICE PHONE: 941-475-2410

*We, the members of Redeemer Lutheran Church are called into the service of our Lord by accepting His command (Matthew 28:18-20):*

- *Making disciples of all nations / peoples.*
- *Baptizing them in the name of the Father, Son and Holy Spirit.*
  - *Proclaiming the Gospel and teaching the Word.*

*Christ's love for us compels us to serve our neighbors as He served us.*